



Becoming a
Member of INAS





INAS

Founded in 1986, INAS is the International Federation for Athletes with Intellectual Impairments. It is a member of the International Paralympic Committee and promotes sport for para-athletes with an intellectual impairment globally.

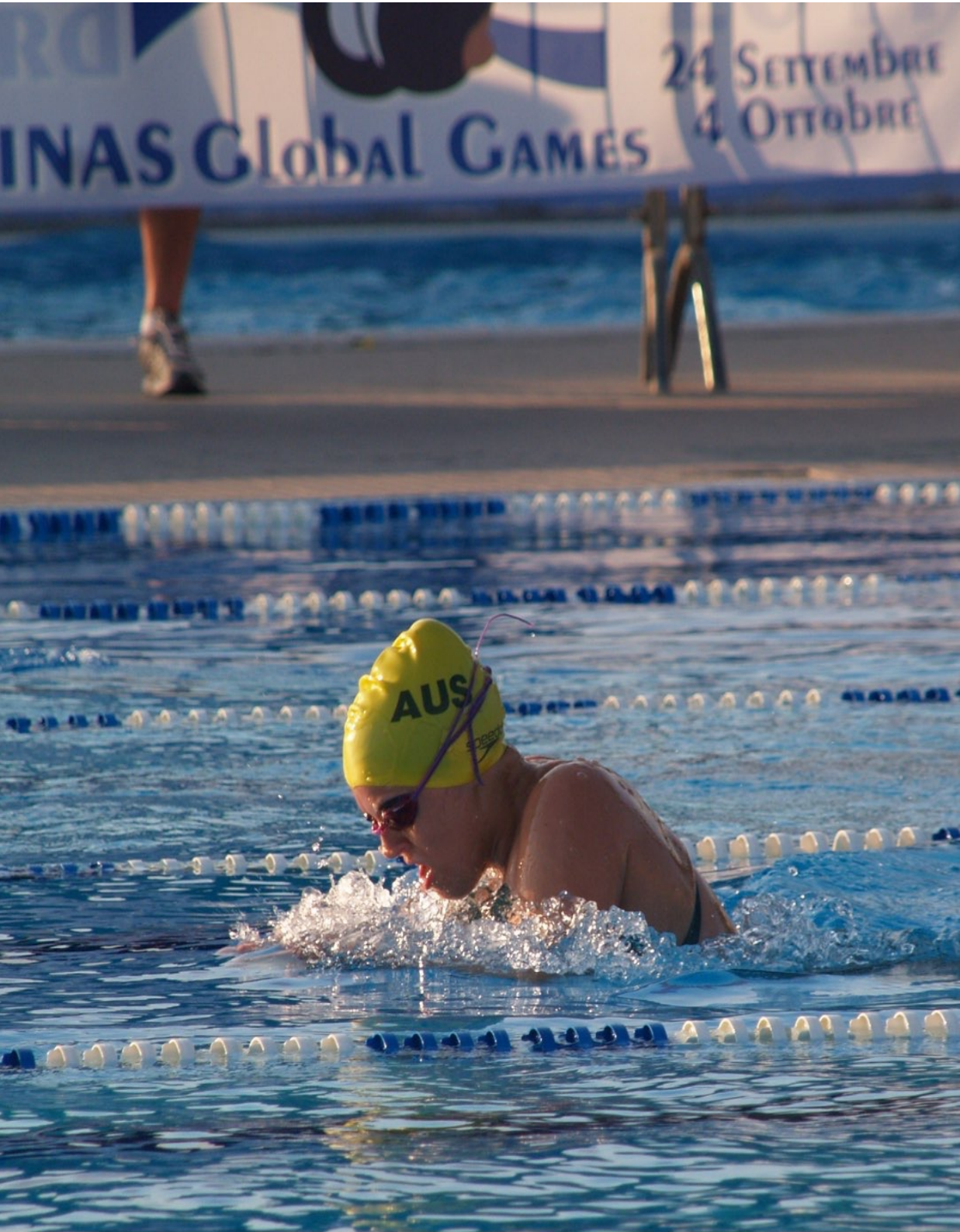
This includes management of the INAS Global Games – a 4 yearly multi-sport championship, an extensive annual programme of World and Regional Championships in 15 sports, and the eligibility process for athlete with an intellectual impairment (a component of athlete classification) on behalf of the Paralympic movement.

“INAS is inspired by a belief that an intellectual impairment should not be a barrier to enjoying and being the best in sport. INAS’ vision is ‘a world where people with intellectual impairment achieve their highest level of excellence through sport’”

We change attitudes, create opportunities and develop pathways in sport to ensure that athletes with an intellectual disability can progress to elite competition and perform at the highest possible level.

INAS is a membership organisation comprising organisations specifically established to lead sport for athletes with an intellectual impairment at a national level, National Paralympic Committees and umbrella organisations that support both disabled and non-disabled athletes.

This pack explains more about the benefits of INAS Membership and the application process and should be read in conjunction with the Membership Policy available on the INAS website.



Becoming a member of INAS

Membership of INAS is open to the following categories of organisations:

- A – INAS National Member Organisations – organisations promoting sport for people with an intellectual impairment
- B - INAS Regions
- C - National Federations of Sport*
- D - International Federations/Organisations of sport
- E - Individual Members

* - only permitted where no National Organisation exists, i.e. category A

National Member Organisations are defined as the recognised national agency responsible for the promotion of sport for athletes with an intellectual impairment within a nation. Such organisations will support a number of sports and will actively participate within the INAS event programme.

INAS Regions are the 5 continental organisations recognised by INAS.

National Federations of Sport are the recognised national members of International Sport Federations. Membership will only be granted in nations where no Category A member exists.

International Federations/Organisations are those organisations recognised as the international governing body of their sport, or an international organisation promoting sport for athletes with an intellectual impairment.

Individual members are anyone who wishes to support INAS and sport for athletes with an intellectual impairment – please refer to the separate guidance available at inas.org

Membership benefits and fees vary according to the membership category, and are described below:



The benefits of INAS membership

Becoming a member of INAS opens up new opportunities for your athletes and gives your organisation access to a host of events and services to help you grow sport for athletes with an intellectual impairment in your country.

	May enter athletes to INAS events	May access the athlete eligibility process	May vote at a General Assembly	General Membership Benefits (eg. newsletters)
National Member Organisations	✓	✓	✓	✓
INAS Regions			✓	✓
National Federations	✓	✓		✓
International Federations/ Organisations			✓	✓
Individual Members				✓

Membership is open to just one organisation per nation and National Member Organisations have a constitutional priority over other members. All members must be committed to the active promotion and organisation of sport for athletes with an intellectual impairment.

Membership fees are listed on the INAS website and are due by the 31st March each year. A discount of up to 50% is available for nations from developing areas as defined by the World Bank.

Completing the application

Applications for membership should be made on the attached form. It should be completed in full and be sent to membership@inas.org together with:

- A copy of your organisations rule/book constitution (an English translation is needed)
- Confirmation from your national government or sports authority that the organisation is the recognised national organisation promoting sport for athletes with an intellectual impairment in your nation
- A signed copy of the membership agreement
- A copy of the National Eligibility Officer qualifications



National Eligibility Officer

A requirement of all National Organisations and National Federations is the appointment of a National Eligibility Officer (NEO).

This is a qualified psychologist whose role is review and approve athlete eligibility applications before they are submitted to INAS. The NEO should not conduct athlete assessment, instead their role is to check each application and the associated reports to ensure that it meets INAS criteria and they support the diagnosis.

The exact role and level of involvement of the NEO should be determined by the Member Organisation but should include:

- Review and assessment of all athlete eligibility applications and associated reports/evidence before they are submitted to INAS
- Advising the member organisation on all issues regarding eligibility and classification
- Be a 'first-point' of contact within the nation for the INAS Head of Eligibility
- Provide advice and guidance to psychologists undertaking athlete assessments
- Attending INAS eligibility workshops as required

NEO's should:

- Be a qualified psychologist appointed by the Inas member organisation.
- Be familiar with the Inas classification policy, eligibility criteria, classification application forms and evidential requirements. These can be found at www.inas.org

Any expenses incurred by performing this role must be agreed in advance with the INAS member.

Membership Application Form

This form should be used by all organisations seeking to become members of INAS. Please complete the form fully and attach all necessary supporting documents.

CATEGORY OF MEMBERSHIP: (tick 1 only)

A – INAS National Member Organisations

D - International Federations/Organisations of sport

B - INAS Regions

E - Individual Members

C - National Federations of Sport*

CONTACT DETAILS:

Contact name:	Position held:	
Organisation name:	Postal Address:	
Phone number:	Email address:	Website address:

ORGANISATION INFORMATION:

When was the organisation formed?
How many athletes with an intellectual impairment are supported by your organisation?
Which sports are regularly practiced by athletes with an intellectual disability within your nation?

Organisation officials and positions held:		
1. Position:	Name:	Qualifications/Experience:
2. Position:	Name:	Qualifications/Experience:
3. Position:	Name:	Qualifications/Experience:
4. Position:	Name:	Qualifications/Experience:
5. Position:	Name:	Qualifications/Experience:
6. Position:	Name:	Qualifications/Experience:
7. Position:	Name:	Qualifications/Experience:
8. Position:	Name:	Qualifications/Experience:
9. Position:	Name:	Qualifications/Experience:
10. Position:	Name:	Qualifications/Experience:

NATIONAL ELIGIBILITY OFFICER (Membership categories A & C only)

NEO Name:	Contact Email:
Postal Address:	
Phone Number (incl. country code):	
Qualifications:	Membership of professional bodies:

MEMBERSHIP AGREEMENT

Applicants confirm that they meet the criteria for INAS Membership and will adhere to the obligations as set out in the [INAS Membership policy](#).

Applicants are committed to the promotion of sport for athletes with an intellectual impairment and will observe the member code of conduct at all times.

Applicants agree to uphold the principles and policies of INAS including, but not limited to, the INAS code of ethics, anti-doping policies and practices and eligibility and classification. Applicants understand that membership may be suspended where such policies are not observed. All policies are available at www.inas.org.

Applicants confirm that the information contained and attached to this form is true, accurate and complete - to the best of the applicants knowledge and belief. Applicants understand that membership is solely at the discretion of the INAS Governing Board and is subject to ratification by the INAS membership.

Applicants agree to use the INAS logo in accordance with INAS brand guidelines and will take all possible precautions to protect the organisation and its brand.

Signature of applicant:..... Signature of President or Secretary General:.....

Position/Office held:.....

Date signed:.....

Completed applications should be sent by email to membership@inas.org.

Please remember to include all attachments:

- Completed application form
- Copy of organisational constitution or governing document (in English where possible)
- Copy of NEO qualifications (category A & C only)

